


TPP-AT-119-HC

 Pizza Prep Table, 15x 1/3 Top Pans, 4 Solid Swing Doors



Dimensions		Build		Technical	
External Width (mm)	3029	Door Description	4 Solid Swing Doors	Temperature Holding	0.5 : 5°C
External Depth (mm)	854	Exterior Construction	Stainless steel front, top & lids, aluminium sides and rear	Refrigerant	R290
External Height (mm)	1133	Interior Construction	Clear coated aluminium, stainless steel base	Voltage / Frequency / Phase	220-240V/50Hz/1
Exclusions	Depth does not include 26 mm for rear bumpers and 42mm for cutting board overhang.	Air Intake Position	Front	Amps	3.3
Gross Volume (Litres)	1124	Ventilation Position	Front	60Hz model Amps	3.6
Supplied Shelves	8	Clearance Required	Zero back and sides	Wattage	759
Shelf Size (L x D mm)	Left & Right: 600 x 712. Central: 648 x 712	Cord Length (Meters)	3.35	60Hz model Wattage	828
Internal Net Height (mm)	550	Standard w/ Locks	Not standard (SPEC3 option)	Defrost Type	Auto
Top Pans Supplied (max depth mm)	15x 1/3 GN (150)				
Unpackaged Weight (kg)	318				
Packaged Weight (kg)	329				
Packaged Dimensions (W x D x H mm)	3188 x 966 x 1245				
Cutting Board (L x D mm)	3029 x 496				
Supplied Supports	ø 127 mm castors (146 mm height)				



Specifications subject to change without notice.
 Technical data above related to energy use based on testing of 50Hz or Dual Frequency models
 Chart dimensions rounded up to the next whole millimeter (inches rounded up to the 1/8")

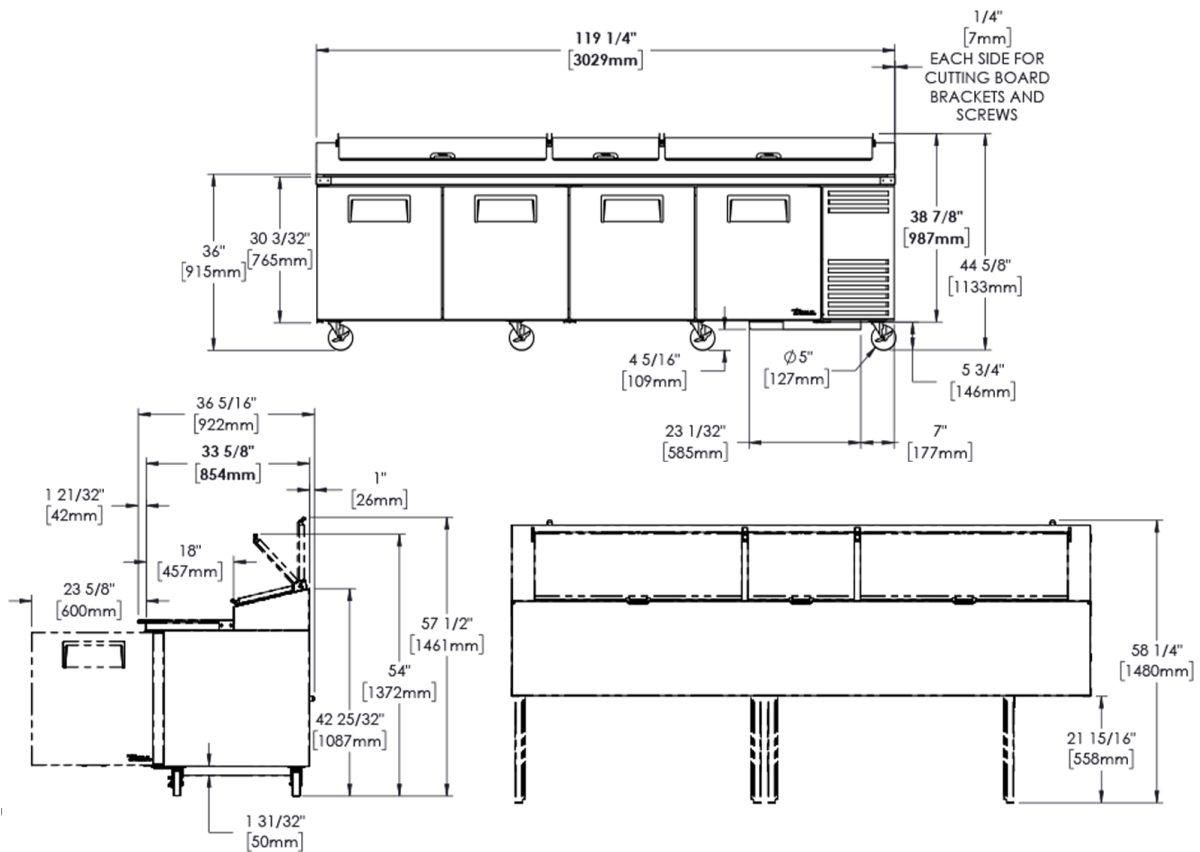
UK & Ireland [0800 783 2049](tel:08007832049)
 EMEA [+41 61 563 07 05](tel:+41615630705)
 Australia [+61 2 9619 9999](tel:+61296199999)

TFIUK@truemfg.com
TrueCHCustomerService@truemfg.com
TrueRefAus@truemfg.com



TPP-AT-119-HC

🇬🇧 Pizza Prep Table, 15x 1/3 Top Pans, 4 Solid Swing Doors



Specifications subject to change without notice.
 Technical data above related to energy use based on testing of 50Hz or Dual Frequency models
 Chart dimensions rounded up to the next whole millimeter (inches rounded up to the 1/8")

UK & Ireland **0800 783 2049**
 EMEA **+41 61 563 07 05**
 Australia **+61 2 9619 9999**

TFIUK@truemfg.com
TrueCHCustomerService@truemfg.com
TrueRefAus@truemfg.com

